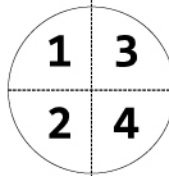
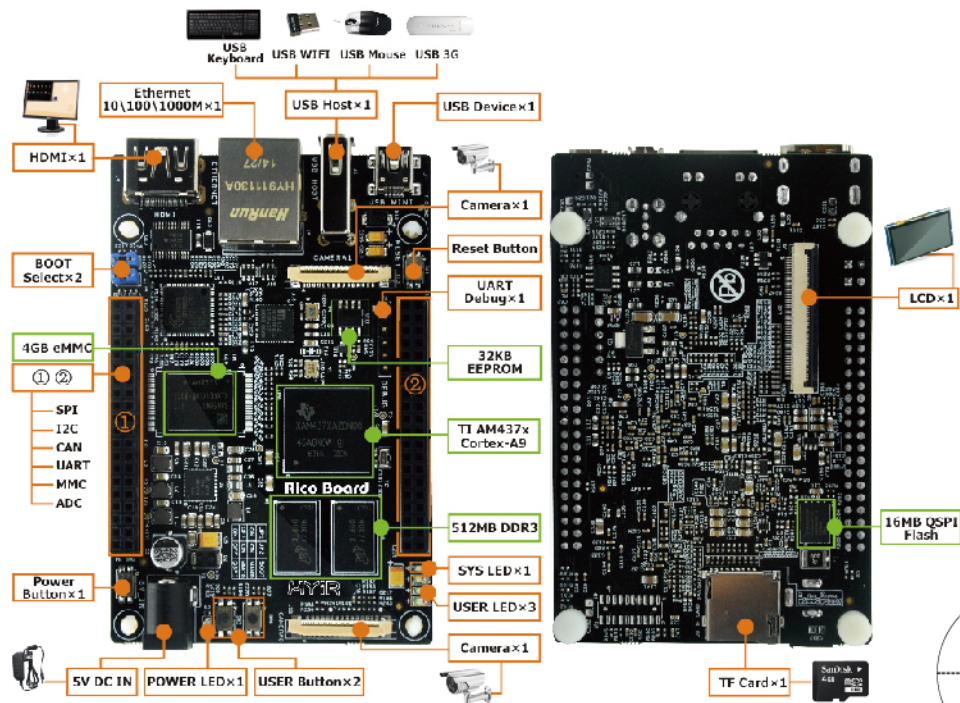
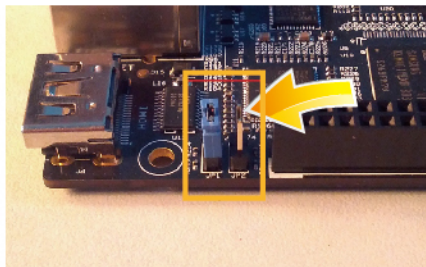


Interfaces



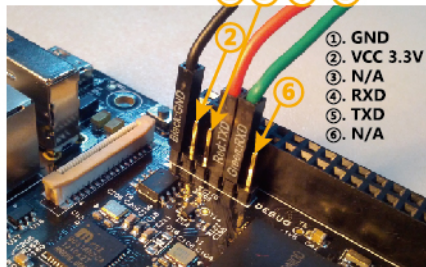
Quick Start



STEP 1

1

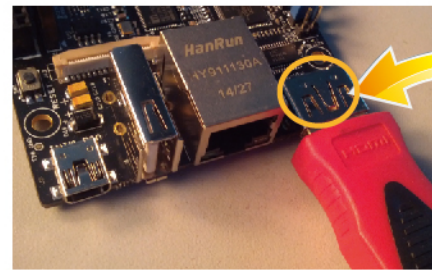
To set Qual-SPI Boot Mode through jumpers:
JP1: Close
JP2: Open



STEP 2

2

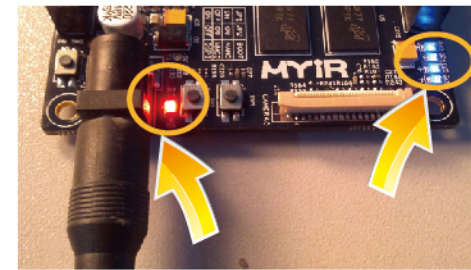
Use UART cable to connect development board J2 interface (TTL voltage) with PC UART port. We recommend you to use MYIR's USB to UART converter MY-UART012U. The driver can be found in Product CD or downloaded from:
<http://www.ftdichip.com/Products/ICs/FT230X.html>



STEP 3

3

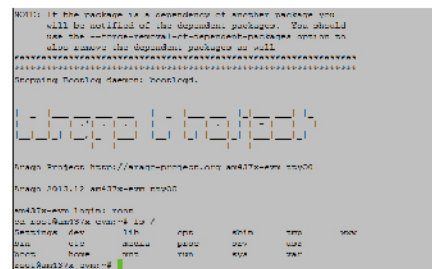
You can select HDMI or LCD Display (LCD interface J9 on bottom side). But HDMI and LCD can not be used at the same time.



STEP 4

4

Power ON the board
If the power indicator D3 and blue status LED are both lighting, the board is working normally.



STEP 5

5

Open Serial Terminal on Host.
Set the parameters:
Baud: 115200, Data bits: 8,
Stop bits: 1, Parity: none,
Flow control: none.
You can see the print info as below.
Login: root
No Password



STEP 6

6

After the system loaded, it will launch in Matrix Gui Desktop.
Then you can continue to get more guide information through our Product CD, online wiki and forums.